



CHRIST'S CHURCH ACADEMY

COMMUNITY PARTNERSHIPS

SUPPORT CCA THROUGH BUSINESS,
FOUNDATION, OR FAMILY SPONSORSHIPS

2025
-
2026

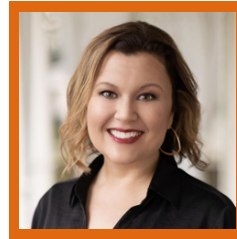
SCHOOL YEAR



BUILDING A GENERATION THAT WILL CHANGE THE WORLD

Dear Friends and Supporters of Christ's Church Academy,

At Christ's Church Academy (CCA), we believe in the power of partnership—and we are deeply grateful for the generous support of the businesses, families, and foundations who have helped our program thrive over the past two years.



Now entering its third year, the 2025–2026 Community Partnership Program offers enhanced opportunities for mission-aligned businesses and other community partners to support CCA through a patron point system. This flexible model allows each sponsor to receive recognition in the areas that matter most to them—such as academics, the arts, athletics, teacher appreciation, or community outreach—while making a collective impact across our school.

While our primary audience is business and corporate partners, we're pleased to also make these opportunities available to families or foundations who may prefer to give personally and receive name recognition in lieu of a company name.

Your partnership helps make possible a rigorous academic experience, outstanding fine arts programs, and competitive athletics, while also funding financial aid, teacher appreciation initiatives, and Love Out Loud, our student-led service outreach across greater Jacksonville.

On behalf of our faculty, staff, and leadership team, thank you for considering a partnership with CCA this year. Your investment supports our mission of making disciples (Matt. 28:19), better disciples (Acts 2:42), and more disciples (Mark 16:15) through excellence in academics, athletics, and the arts.

Together, we are building something lasting—for God's glory and for our community's good.

In His Service,

Brooks Biagini

Associate Head of School for Operations and Advancement

About CCA & Your Impact

Who We Are:

Christ's Church Academy (CCA) is a private, college preparatory school, for preschool through high school located in Jacksonville and is a ministry of Christ's Church. Students benefit from a challenging academic curriculum, fine and performing arts, competitive athletics, and a wide selection of extracurricular activities.

Celebrating 30 Years in Christian Education.

At Christ's Church Academy (CCA), we value partnership. Our Community Partnership Program offers businesses, foundations, and families the chance to support CCA's mission while receiving meaningful recognition and marketing benefits.

Your Partnership Helps Us:

- Support fine arts programs including band, drama, and visual arts
- Equip athletics teams and coaching staff
- Encourage and support our teachers
- Provide supplies that enhance learning
- Enrich curriculum and technology
- Offer financial aid to deserving families

Together, we are building a generation that will change the world!

GIVING LEVELS & PATRON POINTS

PATRON POINTS	PARTNERSHIP LEVELS	CONTRIBUTION
20	CHAMPION PARTNER	\$20,000
15	ALL STAR PARTNER	\$15,000
10	PLATINUM PARTNER	\$10,000
8	GOLD PARTNER	\$8,000
5	SILVER PARTNER	\$5,000
3	BRONZE PARTNER	\$3,000
1	SAPPHIRE PARTNER	\$1,000

CHOOSE YOUR OWN PARTNERSHIP USING PATRON POINTS

SCHOOL EVENTS	3 POINTS	1 POINT
Athletic Program (Per Sport)		✓
Homecoming Week	Presenting	Supporting
Grandparents' Day Program	Presenting	Supporting
Veterans Day Chapels	Presenting	Supporting
Christmas Program Refreshment Station	✓	
Daddy Daughter Dance	Presenting	Supporting
Middle School Dance	Presenting (2 POINTS)	Supporting
Talent Show	Presenting	Supporting
Field Trip Shirts	Presenting	Supporting
Love Out Loud Week	Presenting	Supporting
Night of Excellence Awards	Presenting	Supporting
Spring Festival	Presenting	Supporting
Spring Festival Family Sponsor Option (\$500)		

THE ARTS	2 POINTS	1 POINT
Fall High School Drama Program	Presenting	Supporting
Spring Middle School Drama	Presenting	Supporting
Orff Blacklight Show	Presenting	Supporting
Band End of Year Concert	Presenting	Supporting

STAFF SPONSOR	3 POINTS	1 POINT
Teacher Appreciation Week Luncheon & Snack Sponsor for a Day	✓	
Teacher Appreciation Week Breakfast or Lunch		✓
Coffee Sponsor for Teachers Lounge for Year	✓	
Staff Birthday Official Sponsor for the School Year	✓	
Delayed Start Breakfast Sponsor (Per Month)		✓
Meal Break Sponsor for Faculty & Staff (For Planning Day or Special Event)		✓

GENERAL PROMOTIONS	3 POINTS	1 POINT
Feature on Social Media		✓
Sign in CCA's Welcome Center	✓	
Full Page in Annual Report	✓	
¼ Page in Annual Report		✓

SUPPORT CATEGORIES & RECOGNITION AREAS



ATHLETICS & SPORTS

ATHLETICS PROGRAM SUPPORTER (PER SPORT)

DATE: NOW–MAY 2026

INVESTMENT: \$1,000 (1 POINT)

Choose a sport (Football, Golf, Tennis, Track, Basketball, Softball, Baseball) to support directly.

BENEFITS:

- Recognition on team social media
- Acknowledgement at team awards night
- Direct impact on team needs





SPIRIT & COMMUNITY EVENTS

GRANDPARENTS' DAY PROGRAM

DATE: OCTOBER 7TH, 2025

INVESTMENT:

\$3,000 PRESENTING (3 POINTS)

\$1,000 SUPPORTING (1 POINT)

A cherished event with student performances celebrating family.

BENEFITS:

- Presenting: Logo in program and all communications
- Supporting: Logo in program
- Audience: 1,000 families

VETERANS DAY CHAPELS

DATE: NOVEMBER 4TH, 2025

INVESTMENT:

\$3,000 PRESENTING (3 POINTS)

\$1,000 SUPPORTING (1 POINT)

Honoring veterans with two age-tailored chapel programs.

BENEFITS:

- Presenting: Recognition on slides, distribution of flags
- Supporting: Logo on slides and materials
- Attendance: 1,000+



HOMECOMING WEEK SPONSOR

DATE: OCTOBER 20–24TH, 2025

INVESTMENT:

\$3,000 PRESENTING (3 POINTS)

\$1,000 SUPPORTING (1 POINT)

CCA's Homecoming Week includes themed dress-down days, a pep rally, parade, and Friday night football game with Homecoming Court. Your sponsorship highlights you as an official supporter of these school-wide festivities.

BENEFITS:

- Acknowledgement at the Homecoming Pep Rally
- Acknowledgement during the Homecoming Football Game

CHRISTMAS PROGRAM REFRESHMENT STATION SPONSOR

DATE: DECEMBER 10TH, 2025

INVESTMENT:

\$3,000 PRESENTING (3 POINTS)

Underwrite refreshments for 1,200+ attendees at our all-school Christmas program.

BENEFITS:

- Signage at refreshment stations
- Stage mention during program





COMMUNITY IMPACT & SERVICE

LOVE OUT LOUD WEEK

DATE: FEBRUARY 9-13TH, 2025

INVESTMENT:

\$5,000 PRESENTING (5 POINTS)

\$1,000 SUPPORTING (1 POINT)

Students from preschool to high school serve local partners.

BENEFITS:

- Presenting: "Presented by" in communications, media coverage, volunteer opportunity
- Supporting: Logo in communications



SUPPORT CATEGORIES & RECOGNITION AREAS



STUDENT & FAMILY EVENTS

DADDY DAUGHTER DANCE

DATE: JANUARY 31ST, 2026

INVESTMENT:

\$3,000 PRESENTING (3 POINTS)

\$1,000 SUPPORTING (1 POINT)

A special evening for K–5th graders and fathers.

BENEFITS:

- Presenting: Event signage, logo on invitations and promo
- Supporting: Logo on promo and welcome signage
- Audience: ~150 students + 700+ marketing reach

TALENT SHOW

DATE: MAY 2ND, 2026

INVESTMENT:

\$3,000 PRESENTING (3 POINTS)

\$1,000 SUPPORTING (1 POINT)

Showcasing student talent and faith in an inspiring evening.

BENEFITS:

- Logo on event promotions



MIDDLE SCHOOL DANCE

DATE: FEBRUARY 27TH, 2025

INVESTMENT:

\$2,000 PRESENTING (2 POINTS)

\$1,000 SUPPORTING (1 POINT)

Dance for ~150 middle schoolers with music, photo ops, games, and food.

BENEFITS:

- Presenting: Signage, "Presented by" branding on invites
- Supporting: Logo on promo and welcome signage

FIELD TRIP SHIRTS FOR LOWER SCHOOL STUDENTS

DATE: THROUGHOUT SCHOOL YEAR

INVESTMENT:

\$3,000 PRESENTING (3 POINTS)

\$1,000 SUPPORTING (1 POINT)

Sponsor shirts worn on trips all year with your logo on back.

BENEFITS:

- Presenting: Prominent logo on shirts
- Supporting: Smaller logos (up to 3 sponsors)



ARTS & MUSIC

FALL HIGH SCHOOL DRAMA

DATE: NOVEMBER 20TH, 2025

INVESTMENT:

\$2,000 PRESENTING (2 POINTS)

\$1,000 SUPPORTING (1 POINT)

High school students perform for families and friends.

BENEFITS:

- Logo in printed program and promo materials

ORFF BLACKLIGHT SHOW

DATE: MARCH 4TH, 2026

INVESTMENT:

\$2,000 PRESENTING (2 POINTS)

\$1,000 SUPPORTING (1 POINT)

Unique mallet/percussion performance with blacklight effects.

BENEFITS:

- Logo in printed program and promo materials



SPRING MIDDLE SCHOOL DRAMA

DATE: APRIL 23RD, 2026

INVESTMENT:

\$2,000 PRESENTING (2 POINTS)

\$1,000 SUPPORTING (1 POINT)

Middle school students perform for family audiences.

BENEFITS:

- Logo in printed program and promo materials

BAND END OF YEAR CONCERT SPONSOR

DATE: MAY 7TH, 2026

INVESTMENT:

\$2,000 PRESENTING (2 POINTS)

\$1,000 SUPPORTING (1 POINT)

Celebrate our talented student musicians.

BENEFITS:

- Logo in printed program and promo materials

SUPPORT CATEGORIES & RECOGNITION AREAS



TEACHER & STAFF APPRECIATION

STAFF “SPIRIT SHIRTS” – NEW SCHOOL YEAR

DATE: START OF 2025–2026 SCHOOL YEAR

INVESTMENT:

\$3,000 (3 POINTS)

Provide official spirit-wear shirts with custom appreciation notes.

BENEFITS:

- Logo on attached appreciation cards

COFFEE SPONSOR (YEAR-LONG)

DATE: ENTIRE SCHOOL YEAR

INVESTMENT:

\$3,000 (3 POINTS)

Underwrite coffee supplies for staff lounges.

BENEFITS:

- Signage at coffee stations

OFFICIAL STAFF BIRTHDAY SPONSOR

DATE: ENTIRE SCHOOL YEAR

INVESTMENT:

\$3,000 (3 POINTS)

Celebrate staff birthdays monthly at all-staff sessions.

BENEFITS:

- Logo on printed birthday cards
- Logo on screen during celebration
- Opportunity to attend and present

DELAYED START BREAKFAST SPONSOR (MONTHLY)

DATE: MONTHLY DELAYED START DAYS
(2025–2026 SCHOOL YEAR)

INVESTMENT:

\$1,000 (1 POINT)

Fuel our faculty and staff on special monthly mornings by underwriting hearty breakfasts before all-staff meetings.

BENEFITS:

- Logo featured on screen in cafeteria
- Opportunity to attend and share brief remarks at start of program

OFFICIAL TEACHER APPRECIATION WEEK SPONSOR

DATE: MAY 4-8TH, 2026

INVESTMENT:

\$3,000 (3 POINTS)

\$1,000 (1 POINT)

Support daily treats, meals, and gifts for 125 teachers.

BENEFITS:

- \$3,000: One day of lunch, snack, and gifts
- \$1,000: One day of breakfast, lunch, or treats

MEAL BREAK SPONSOR FOR FACULTY & STAFF

DATE: TEACHER PLANNING DAYS OR
SPECIAL EVENTS (CAMPUS KICK-OFF,
CHRISTMAS PROGRAM, ETC.)

INVESTMENT:

\$1,000 (1 POINT)

Support our dedicated team by underwriting grab-and-go meal breaks on long or busy days. Perfect for planning days or before major events.

BENEFITS:

- Signage by provided food acknowledging your support
- Recognition in communications to faculty and staff



SCHOOL-WIDE ACADEMIC RECOGNITION

NIGHT OF EXCELLENCE AWARDS

DATE: MAY 12TH, 2026

INVESTMENT:

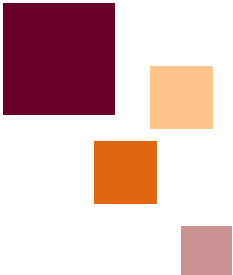
\$3,000 (3 POINTS)

\$1,000 (1 POINT)

Celebrate academic and athletic achievements in a formal program.

BENEFITS:

- Presenting: Logo on screens, printed program, optional video message
- Supporting: Logo in program, event signage



SUPPORT CATEGORIES & RECOGNITION AREAS



PTP SPONSORSHIP OPPORTUNITIES

SPRING FESTIVAL, HOSTED BY PTP

DATE: MARCH 26TH, 2026

INVESTMENT:

\$5,000 PRESENTING (5 POINTS)

\$1,000 SUPPORTING (1 POINT)

Family-friendly evening with games, food, and community fun.

BENEFITS:

- Presenting: 4 spring festival shirts, 4 all access wristbands, concession/food tickets, logo on back of shirt, logo on signage at event
- Supporting: 4 spring festival shirts, 2 all access wristbands, concession/food tickets, logo on back of shirt, logo on signage at event

FAMILY SPONSOR OPTION – \$500 (NO PATRON POINTS)

BENEFITS:

- 4 spring festival shirts
- 2 all access wristbands
- Concession/food tickets
- Name/logo on back of shirt

(ALSO AVAILABLE TO PURCHASE VIA FESTIVAL REGISTRATION WEBSITE)



OTHER GENERAL PROMOTIONS

FEATURE ON SOCIAL MEDIA

INVESTMENT:

\$1,000 (1 POINT)

SIGN IN WELCOME CENTER

INVESTMENT:

\$3,000 (3 POINTS)

FULL PAGE IN ANNUAL REPORT

INVESTMENT:

\$3,000 (3 POINTS)

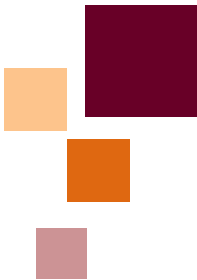
1/4 PAGE IN ANNUAL REPORT

INVESTMENT:

\$1,000 (1 POINT)



**MAKE DISCIPLES.
BETTER DISCIPLES.
MORE DISCIPLES.**



KEY 2025-2026 DATES FOR COMMUNITY PARTNERS

Grandparents Day (K-8th Grade) – October 7th

Homecoming Week – October 20-24th

Veterans Day Chapels – November 4th

Fall High School Drama – November 20th

Christmas Program – December 10th

Daddy Daughter Dance – January 31st

Love Out Loud Week – February 9-13th

Middle School Dance – February 27th

Orff Blacklight Show – March 4th

Spring Festival, Hosted by PTP – March 26th

Spring Middle School Drama – April 23rd

Talent Show – May 2nd

Teacher Appreciation Week – May 4-8th

Band End of Year Concert – May 7th

Night of Excellence Awards – May 12th

Fall Sports

Football, Golf, Cross Country, and Cheer

Winter Sports

Basketball and Soccer

Spring Sports

Baseball, Tennis, Softball, and Track & Field



**Yes! I am interested in a community partnership
with CCA for the 2025-2026 school year!**

Submit your interest with CCA online by visiting: ccajax.org or scan the following QR code.

To complete your community partnership, please fill out the enclosed Community Partnership Commitment Form, indicating your total contribution, contact information, and the areas you'd like to support and be recognized in. Submit the completed form to Brooks Biagini at BBiagini@ccajax.org.

You may then scan the QR code to make your payment online. Please note: the QR code is for payment only and does not allow you to select benefits. Payments can be made in full or scheduled in multiple installments throughout the year.

If you prefer to pay by check, have your FACTS account billed, or use another method, simply submit your completed form and indicate your preferred payment method—Brooks will follow up to coordinate accordingly.

Brooks Biagini, Associate Head of School for Operations and Advancement, is also happy to speak with you about partnership opportunities or philanthropy at CCA. Feel free to contact her at (904) 268-8667 or BBiagini@ccajax.org.



CHRIST'S CHURCH ACADEMY

THANK YOU FOR HELPING OUR CCA EAGLES SOAR!

COMMUNITY PARTNERSHIPS COMMITMENT FORM

2025-2026

COMPANY NAME

CONTACT FIRST NAME

CONTACT LAST NAME

PHONE

EMAIL

AFFILIATION WITH CCA

Who should we work with at your company to obtain logo and arrange your sponsorship benefits with? (If different from you).

May We Recognize You Publicly?

☐ Yes ☐ No ☐ I'd prefer we remain anonymous

SELECT YOUR PARTNERSHIP LEVEL

☐ Champion \$20,000 (20 Points)

☐ Silver \$5,000 (5 Points)

☐ All Star \$15,000 (15 Points)

☐ Bronze \$3,000 (3 Points)

☐ Platinum \$10,000 (10 Points)

☐ Sapphire (1 Point)

☐ Gold \$8,000 (8 Points)

☐ I'm interested in an in-kind partnership.

How would you like to utilize your patron points?

☐ I'd like to utilize my patron points as follows: ☐ Need more time to decide. Please contact me.

(Write the number of points in the box to select level)

✓	SCHOOL EVENTS	3 POINTS	1 POINT
	Athletic Program (Per Sport)		
	Homecoming Week	Presenting	Supporting
	Grandparents' Day Program	Presenting	Supporting
	Veterans Day Chapels	Presenting	Supporting
	Christmas Program Refreshment Station		
	Daddy Daughter Dance	Presenting	Supporting
	Middle School Dance	Presenting (2 POINTS)	Supporting
	Talent Show	Presenting	Supporting
	Field Trip Shirts	Presenting	Supporting
	Love Out Loud Week	Presenting	Supporting
	Night of Excellence Awards	Presenting	Supporting
	Spring Festival	Presenting	Supporting
	Spring Festival Family Sponsor Option (\$500)		

✓	THE ARTS	2 POINTS	1 POINT
	Fall High School Drama Program	Presenting	Supporting
	Spring Middle School Drama	Presenting	Supporting
	Orff Blacklight Show	Presenting	Supporting
	Band End of Year Concert	Presenting	Supporting

✓	GENERAL PROMOTIONS	3 POINTS	1 POINT
	Feature on Social Media		✓
	Sign in CCA's Welcome Center	✓	
	Full Page in Annual Report	✓	
	¼ Page in Annual Report		✓

✓	STAFF SPONSOR	3 POINTS	1 POINT
	Teacher Appreciation Week Luncheon & Snack Sponsor for a Day	✓	
	Teacher Appreciation Week Breakfast or Lunch		✓
	Coffee Sponsor for Teachers Lounge for Year	✓	
	Staff Birthday Official Sponsor for the School Year	✓	
	Delayed Start Breakfast Sponsor (Per Month)		✓
	Meal Break Sponsor for Faculty & Staff (For Planning Day or Special Event)		✓

How Would You Like To Pay?

☐ Please invoice me ☐ Check is enclosed
☐ I'll pay online using a credit card

Please submit this completed form to **Christ's Church Academy, ATTN: Brooks Biagini, Associate Head of School for Operations and Advancement, 6045 Greenland Rd., Suite 400, Jacksonville, FL 32258.**

For questions or to submit electronically please email BBiagini@ccajax.org or call (904) 268-8667 ext. 2013.

Checks should be written to **Christ's Church Academy. Tax ID # 59-1484534**

